

Extreme Platform ONE™

以 AI 引領網路體驗新時代

Rex Chen
Principle Systems Engineer

Statements during this event may include forward-looking statements within the meaning of the "safe harbor" provisions of the Private Securities Litigation Reform Act of 1995. These forward-looking statements speak only as of the date made during this session.

Statements during this event may also include discussion of Extreme Networks' current product roadmap. All product releases will be on a when-and-if available basis. Actual feature development and timing of releases will be at the sole discretion of Extreme Networks. Not all features are supported on all platforms. Presentation of the product roadmap does not create a commitment by Extreme Networks to deliver a specific feature. Contents of this roadmap are subject to change without notice.

There are several important factors that could cause actual events and/or the product roadmap to differ materially from those suggested or indicated by such forward-looking statements. These include, among others, factors discussed under Item 1A, "Risk Factors," in the company's Annual Report on Form 10-K, quarterly Forms 10-Q, and other reports filed with the SEC. The company undertakes no obligation to update any forward-looking statements, whether as a result of new information, the occurrence of certain events or otherwise. As a result, of these risks and others, actual results and/or the product roadmap could vary significantly from those anticipated and discussed during the event, and the company's financial condition and results of operations could be materially adversely affected.

Managing and Securing the Network is Getting More and More Complex



Too many apps, interfaces, logins
Integration too expensive



Siloed AI, Apps, and Data

AI not living up to it's promise
because it's siloed



Fragmented licensing models:
difficult to buy, manage, renew

“80%

of IT decision makers say the **network is more complex** than two years ago”

—ZK Research, theCUBE Research

SS

“**Siloed data** confines access, resulting in restricted visibility into business operations. This limitation obstructs effective strategic planning and decision-making, **impeding the full potential of AI.**”

—Forbes

SS

35%

As stated by Gartner®, “By 2026, 35% of CIOs focused on composability **will break up with their bad vendors** due to their low rating in the License Complexity Index”

ZK Research and theCUBE Research, The Impact of AI on the Network, Zeus Kerravala, Bob Laliberte, July 2024

Forbes, Data Dilemmas: Say Goodbye To Silos And Hello To Unrivaled AI Insights, Muhi S. Majzoub, May 26, 2024

Gartner, Maverick Research: It's Time to Fire Software Vendors With Complex Licensing!, Stephen White, Roger Williams, November 7, 2023

GARTNER is a registered trademark and service mark of Gartner, Inc. and/or its affiliates in the U.S. and internationally and is used herein with permission. All rights reserved.

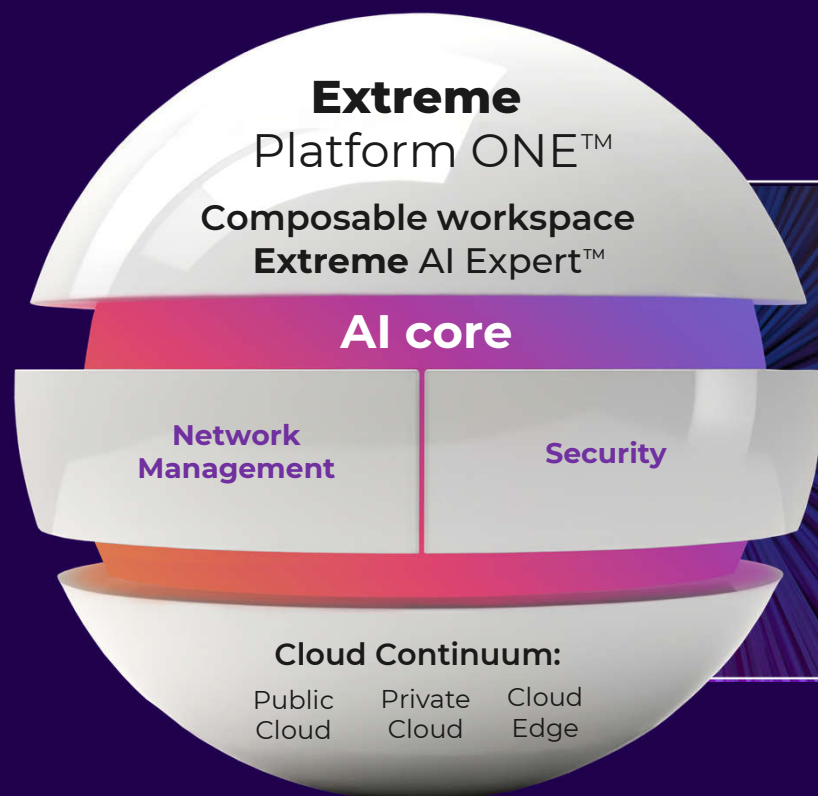
©2024 EXTREME NETWORKS, INC. ALL RIGHTS RESERVED.



Extreme has been on a mission to
reduce complexity across Networking

Here's the next big step

Extreme Platform ONE: Enterprise Secure Connectivity Made Easy



Combining connectivity, automation, security, data, and analytics with AI into one powerful experience, **Extreme Platform ONE radically simplifies the way organizations deploy, manage, and secure the network.**



Wireless



Wired



SD-WAN



Security



Ecosystem

Extreme Platform ONE: The One for All



**One Integrated
Experience**

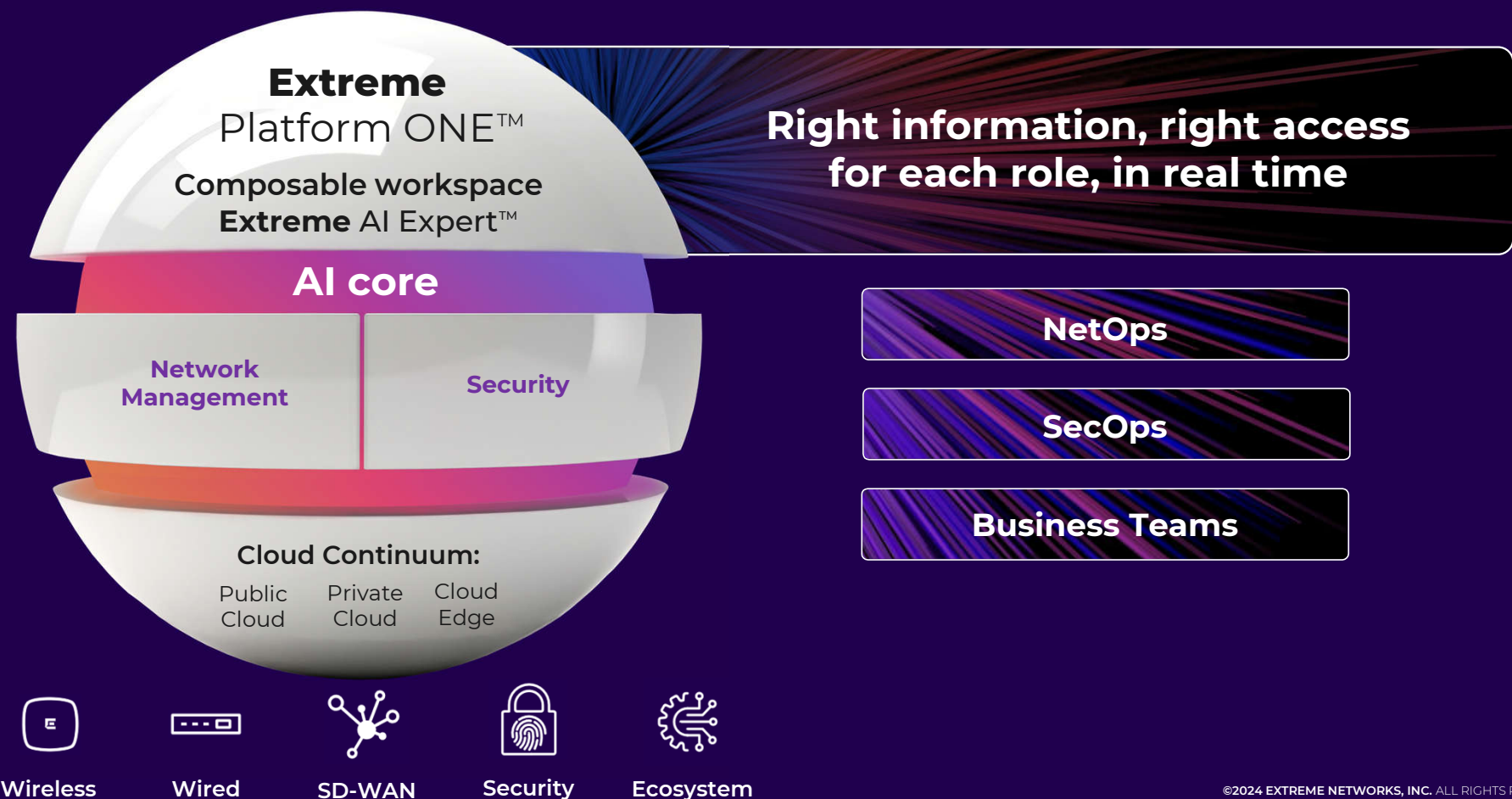


**Automation
Enhanced
by Built-In AI**






**Radically
Simplified
Licensing**

Extreme Platform ONE: Enterprise Secure Connectivity Made Easy



One Experience For Many Teams Beyond NetOps

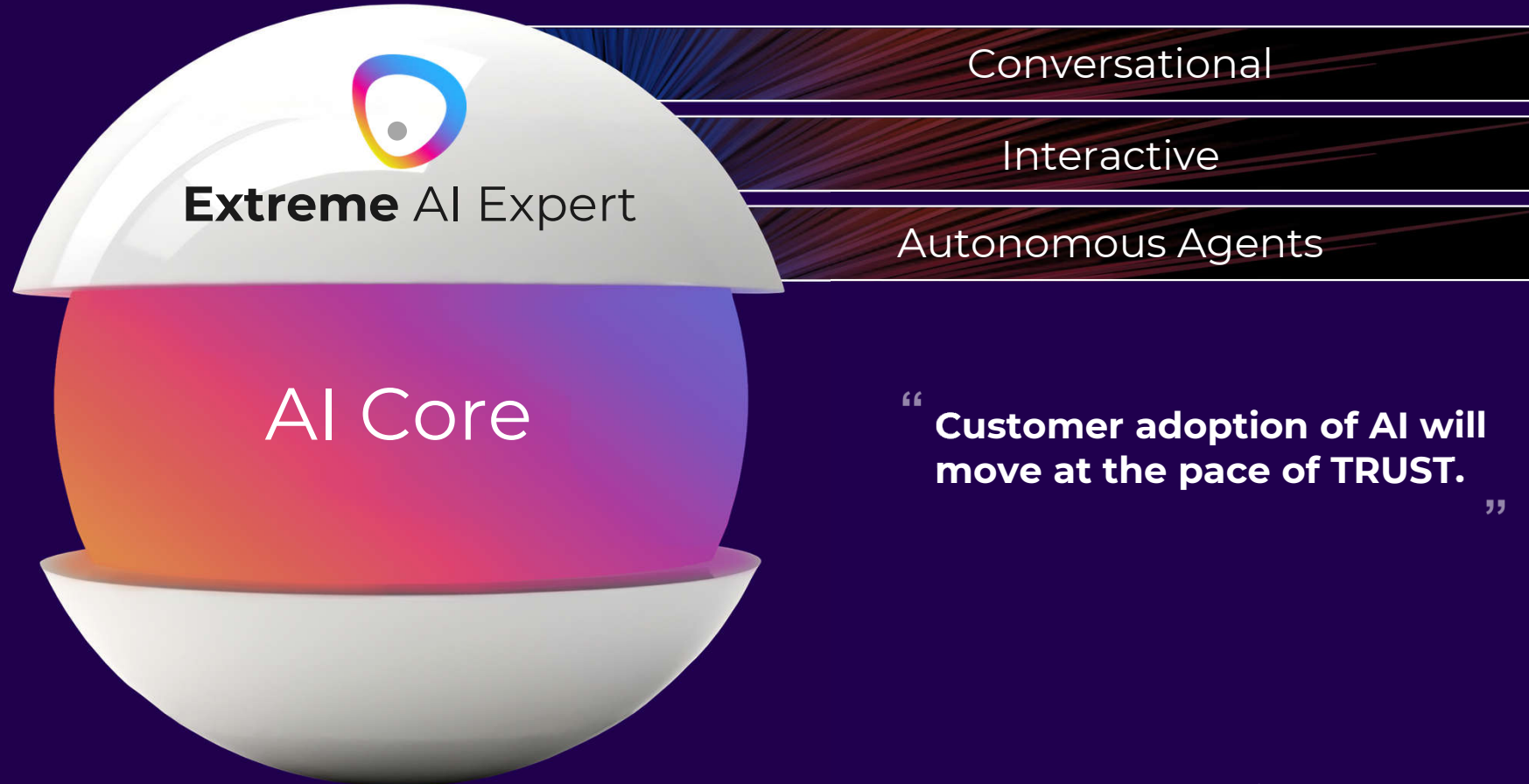


 NetOps	Network Admin & Engineer	Network Architect	Help Desk / IT Technician	WAN Architect	OT Engineer (Medical, Manufacturing)
 SecOps	Security Engineer Analyst	Incident Response Manager	Security Operations Manager	CISO	CIO
 Business	Procurement Officer	Legal or Compliance Officer	Business Systems Analyst	HR and Facilities Officer	CFO

One Experience: Beyond Fixing the Network

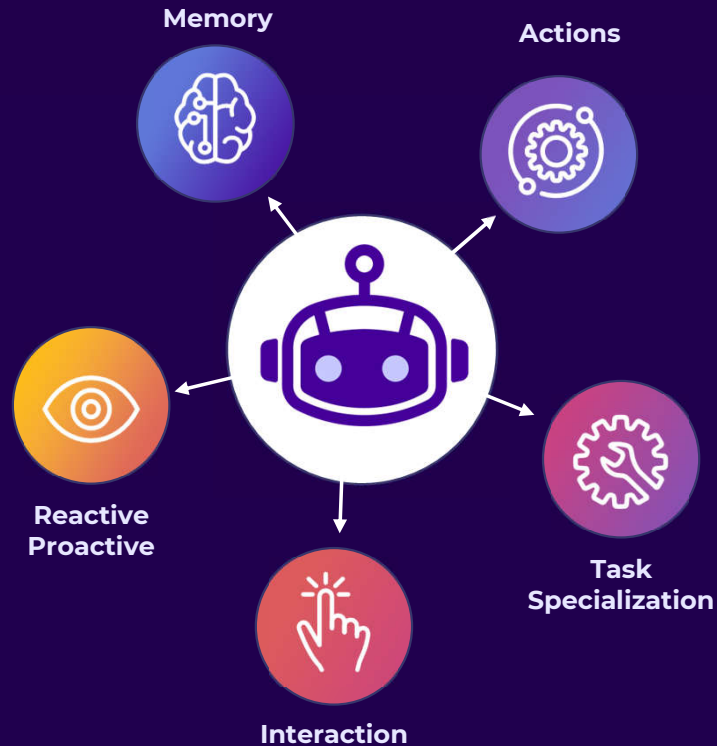


Use Extreme AI Expert in 3 Different Modes



“**Customer adoption of AI will move at the pace of TRUST.**”

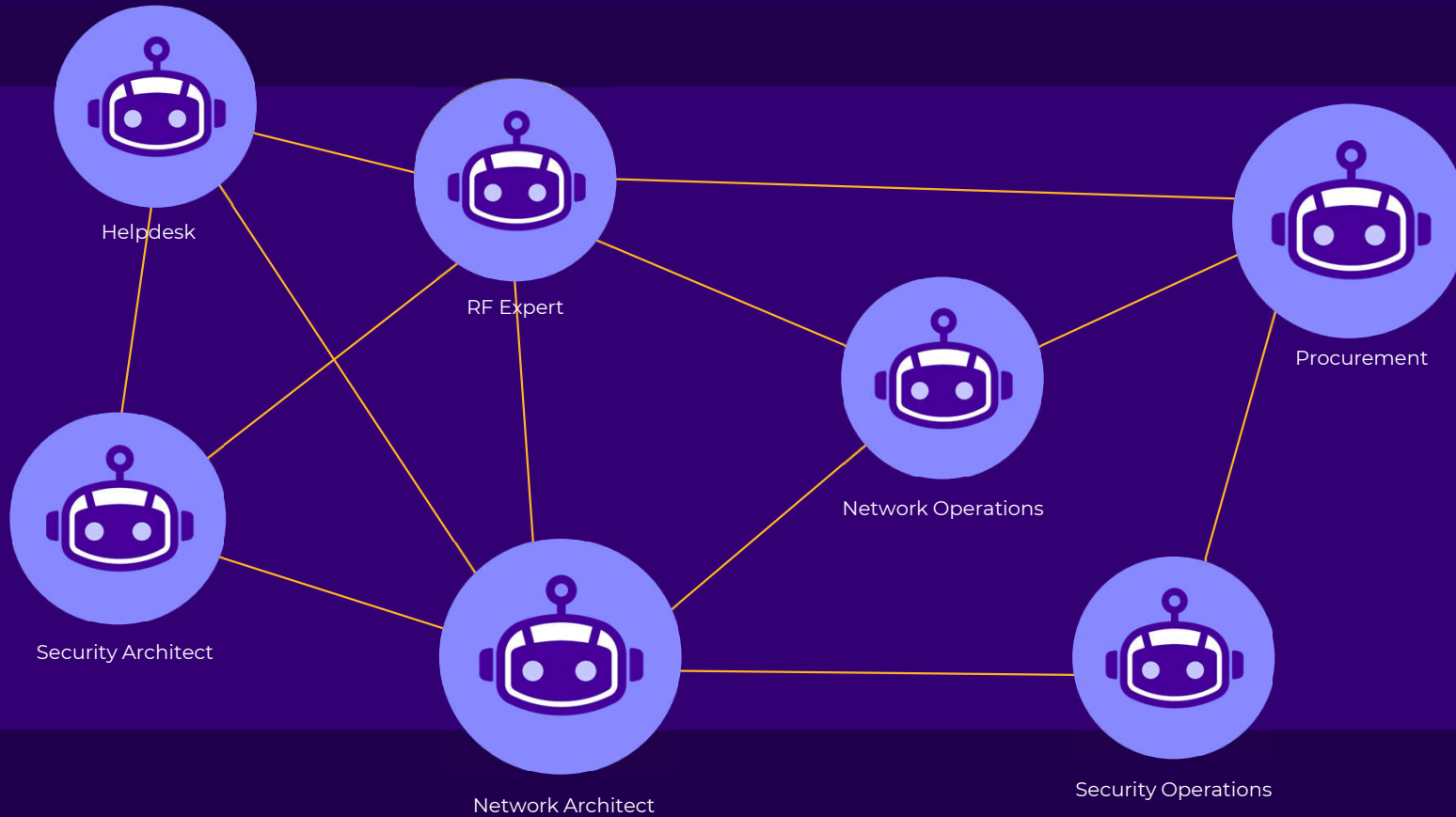
So, what is an “Agent”?



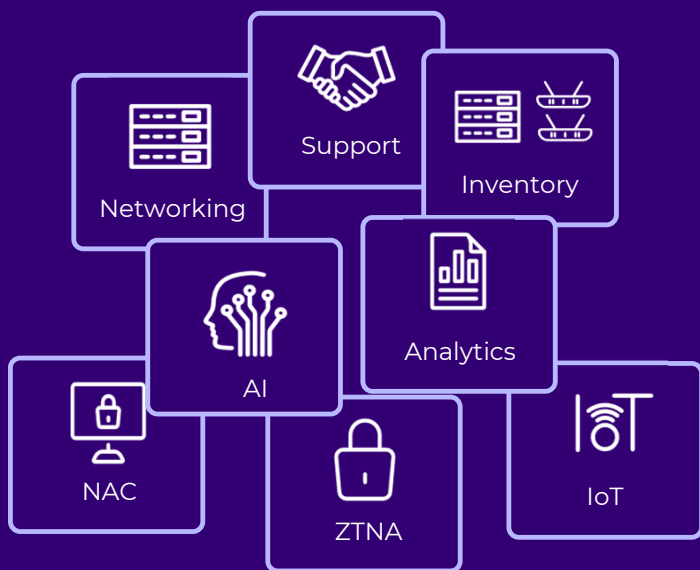
An agent has several key capabilities

- Autonomous actions using tools and recommendations w/ or w/o HITL
- Having memory for more context
- Being Reactive as well as being proactive
- Specialized in one or few tasks
- Interaction with both humans and other agents

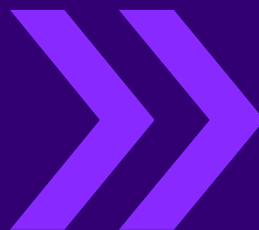
The future of teams - Human + Digital Workforce



Complex, Fragmented Licensing



The Standard Bill of Materials



Extreme Platform ONE™
Subscriptions
Include

Networking & Security features

Extreme AI Expert

TAC/OS Support

Co-Terming of Contracts

Extreme Platform ONE: The One for All



**One Integrated
Experience**



**Automation
Enhanced
by Built-In AI**



**Radically
Simplified
Licensing**

